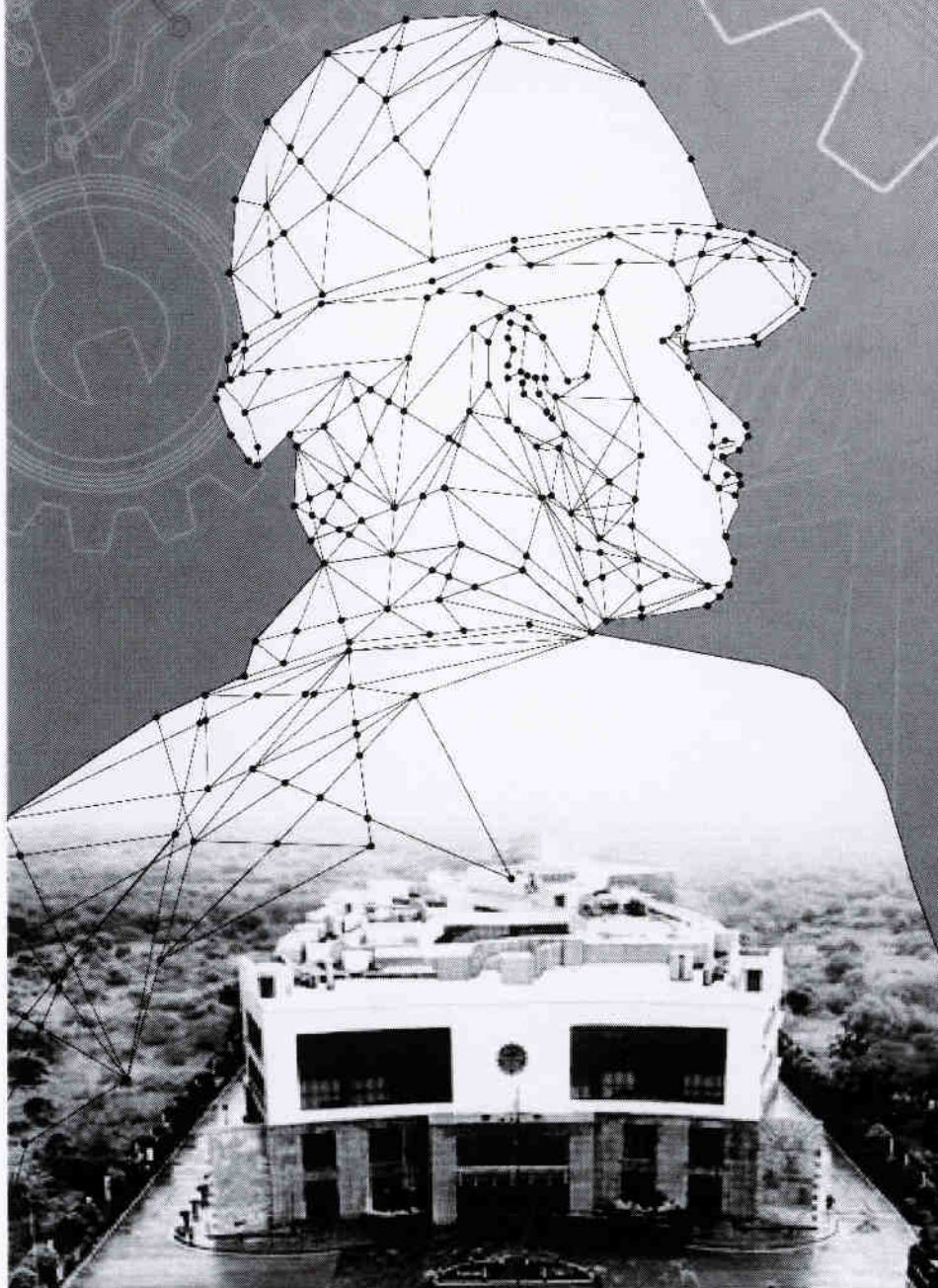
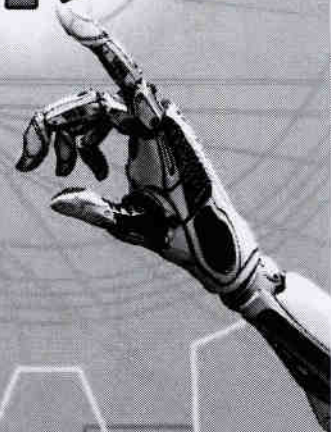


अखिल भारतीय तकनीकी शिक्षा परिषद
**ALL INDIA COUNCIL FOR
TECHNICAL EDUCATION**



APPROVAL PROCESS HANDBOOK 2021-22



APPENDIX-7

Norms for Faculty Requirements and Cadre Ratio of the Technical Institutions

7.1 Diploma/ Post Diploma Certificate Programme

Programme	Faculty: Student based on Approved Intake	Principal/ Director	Head of the Department	Faculty	Total
		A	B	C	D = A+B+C
Engineering and Technology/ Applied Arts and Crafts Design/ Hotel Management and Catering Technology	1:25	1	1 per Department	(S/ 25) - 1	S/25

S - Sum of the number of students as per "Approved Intake" at all years

7.2 Under Graduate Degree Programme

Programme	Faculty: Student based on Approved Intake	Principal/ Director	Professor	Associate Professor	Assistant Professor	Total
		A	B	C	D	A+B+C+D
Engineering and Technology	1:20	1	$\frac{S}{20 \times R} - 1$	$\frac{S}{20 \times R} \times 2$	$\frac{S}{20 \times R} \times 6$	$\frac{S}{20}$
Planning	1:16	1	$\frac{S}{16 \times R} - 1$	$\frac{S}{16 \times R} \times 2$	$\frac{S}{16 \times R} \times 6$	$\frac{S}{16}$
Applied Arts and Crafts	1:10	1	$\frac{S}{10 \times R} - 1$	$\frac{S}{10 \times R} \times 2$	$\frac{S}{10 \times R} \times 6$	$\frac{S}{10}$
Design	1:10	1	$\frac{S}{10 \times R} - 1$	$\frac{S}{10 \times R} \times 2$	$\frac{S}{10 \times R} \times 6$	$\frac{S}{10}$
Hotel Management and Catering Technology	1:20	1	$\frac{S}{20 \times R} - 1$	$\frac{S}{20 \times R} \times 2$	$\frac{S}{20 \times R} \times 6$	$\frac{S}{20}$

S - Sum of the number of students as per "Approved Intake" for all years, R = (1+2+6)=9



Satish
31/01/2023
PRINCIPAL
KALIM MUHAMMED SALEGH
COLLEGE OF ENGINEERING



AALIM MUHAMMED SALEGH COLLEGE OF ENGINEERING

Approved by All India Council for Technical Education, New Delhi
Affiliated to Anna University, Chennai
NAAC Accredited Institution
"Nizara Educational Campus" Muthapudupet, IAF-Avadi, Chennai - 55.

Number of Sanctioned Posts for the Academic Year 2021-2022

Programme	Code	No of Sanctioned Seats	Intake Year wise				Total Strength (II+III+IV)	As Per Norms	Sanctioned Posts
			I	II	III	IV			
B.E Civil Engineering	103	60	60	60	60	60	180	1:20	9
B.E Computer Science Engineering	104	120	120	120	120	120	360	1:20	18
B.E Electrical and Electronics Engineering	105	60	60	60	60	60	180	1:20	9
B.E Electronics and Communication Engineering	106	60	60	60	120	120	240	1:20	12
B.E Mechanical Engineering	114	60	60	60	120	120	300	1:20	15
B.Tech Information Technology	205	60	60	60	60	60	180	1:20	9
Science & Humanities	-		420	-	-	-	420	1:20	21
Total							1860		93



Sathish
31.01.2023

PRINCIPAL

PRINCIPAL
AALIM MUHAMMED SALEGH
COLLEGE OF ENGINEERING

☎ 044 2684 2086 / 2684 2627 / 2684 2456

✉ info@aalimec.ac.in / principal@aalimec.ac.in 🌐 www.aalimec.ac.in



AALIM MUHAMMED SALEGH COLLEGE OF ENGINEERING

Approved by All India Council for Technical Education - New Delhi

Affiliated to Anna University, Chennai

"NIZARA EDUCATIONAL CAMPUS", MUTHAPUDUPET, AVADI - IAF, CHENNAI - 600 055.

TO WHOMSOEVER IT MAY CONCERN

This is to certify that the Number of Sanctioned Posts during the year 2021-2022 in our institution is as follows:

S.No	Academic Year	Number of Sanctioned Posts
1.	2021-2022	93



Sathya
31.01.2023

PRINCIPAL

PRINCIPAL
AALIM MUHAMMED SALEGH
COLLEGE OF ENGINEERING